

Sound rider
« Danse mémoire, danse »
A Filetta
Paolo Fresu, Daniele di Bonaventura

Sound engineer :

Jacques Fach

phone : +336 72 90 17 70

email : jacques.fach@free.fr

The entry sound technician will have ensured before the band arrives that the whole audio chain functions correctly and with a very high quality.

- **Sound console within the concert hall not under balcony**
High quality digital (CL5, CL3, M7CL, Digidesign)
- 1 quality reverb (PCM91, 70, M2000..) on Auxiliary post fader only if there are no digital desk
- **Front broadcasting in wide band, homogeneous and adapted to the gauge**
Heil, Adamson, 33Audio, D&B are strongly recommended (no UPA).

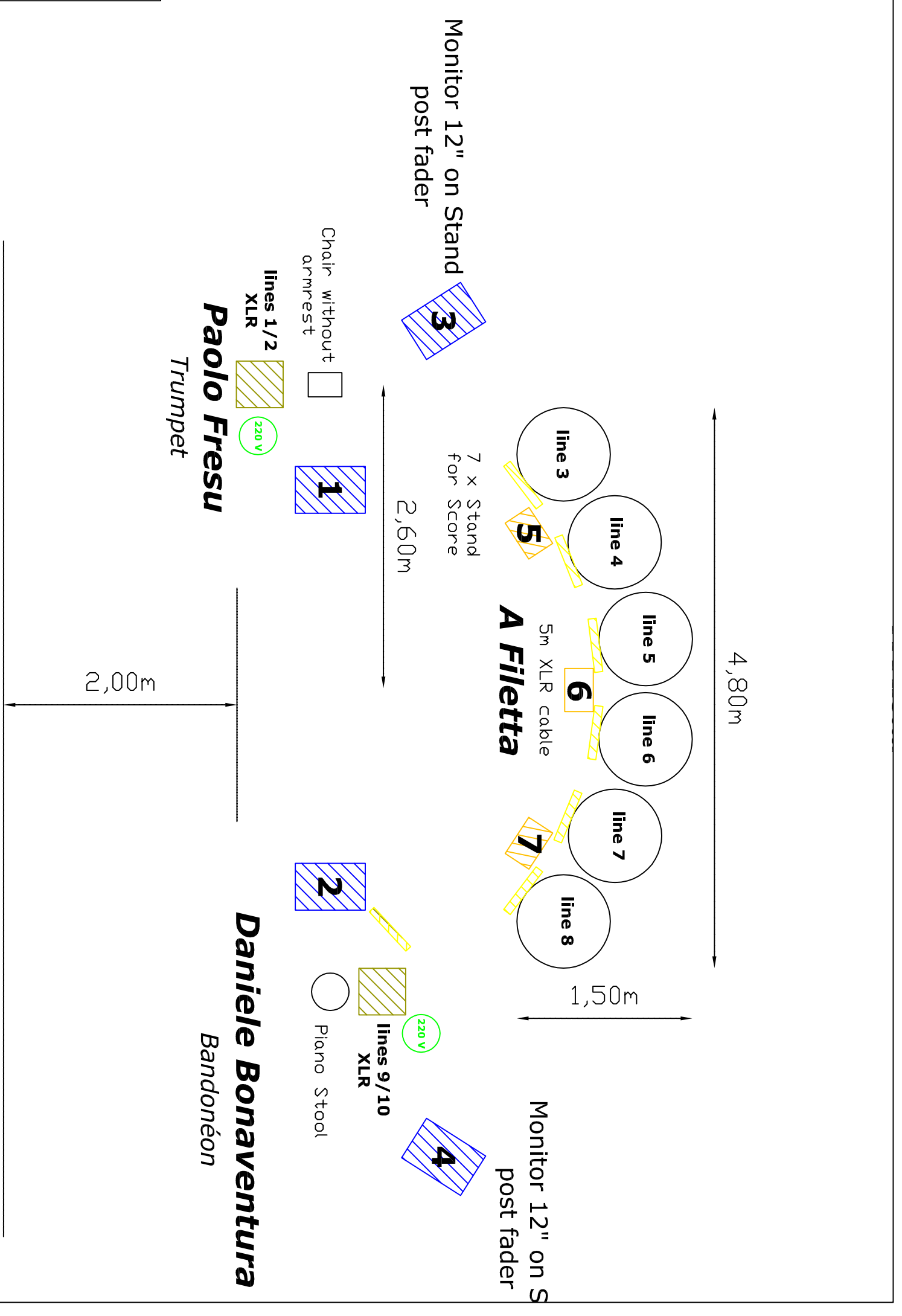
Monitoring : 2 wedges monitor 12" (MTD112, PMX12) on Aux 1, 2 pre fader for Trumpet and Bandoneon
 2 side monitor 12" on stands 1.6m height for singers on Aux 3, 4 post fader
 3 wedge monitor 8" for singers on Aux 5, 6, 7 pre fader

Install : 6 cables 5m on patch (at the feet of singers) without stand
 We provide 6 x microphones for singers
 2 XLR + power + 1 box 0.4m x 0.4m x 0.4m
 1 chair without armrest for left. (Trumpet)
 2 XLR + power 1 box 0.4m x 0.4m x 0.4m
 1 piano stool for right. (Bandoneon)
 We need 7 x music stands for scores

1 voice microphone at the foh desk (SM58)

No smoke on the stage, thanks a lot ...

PATCH		
1	KMS 105 (own)	Max
2	KMS 105 (own)	François
3	KMS 105 (own)	Jean
4	KMS 105 (own)	Jean Claude
5	KMS 105 (own)	Stephane
6	KMS 105 (own)	Paul
9	XLR	Trumpet Left
10	XLR	Trumpet Right
11	XLR	Bandoneon Left
12	XLR	Bandoneon Right
13	Reverb return Left	
14	Reverb return Right	



4,80m

1,50m

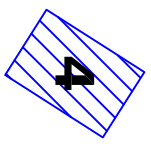
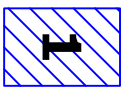
2,50m

2,00m

Monitor 12" on Stand
post fader
3

Monitor 12" on S
post fader
4

Chair without
armrest



lines 1/2
XLR



lines 9/10
XLR



Piano Stool

Paolo Fresu
Trumpet

Daniele Bonaventura
Bandonéon